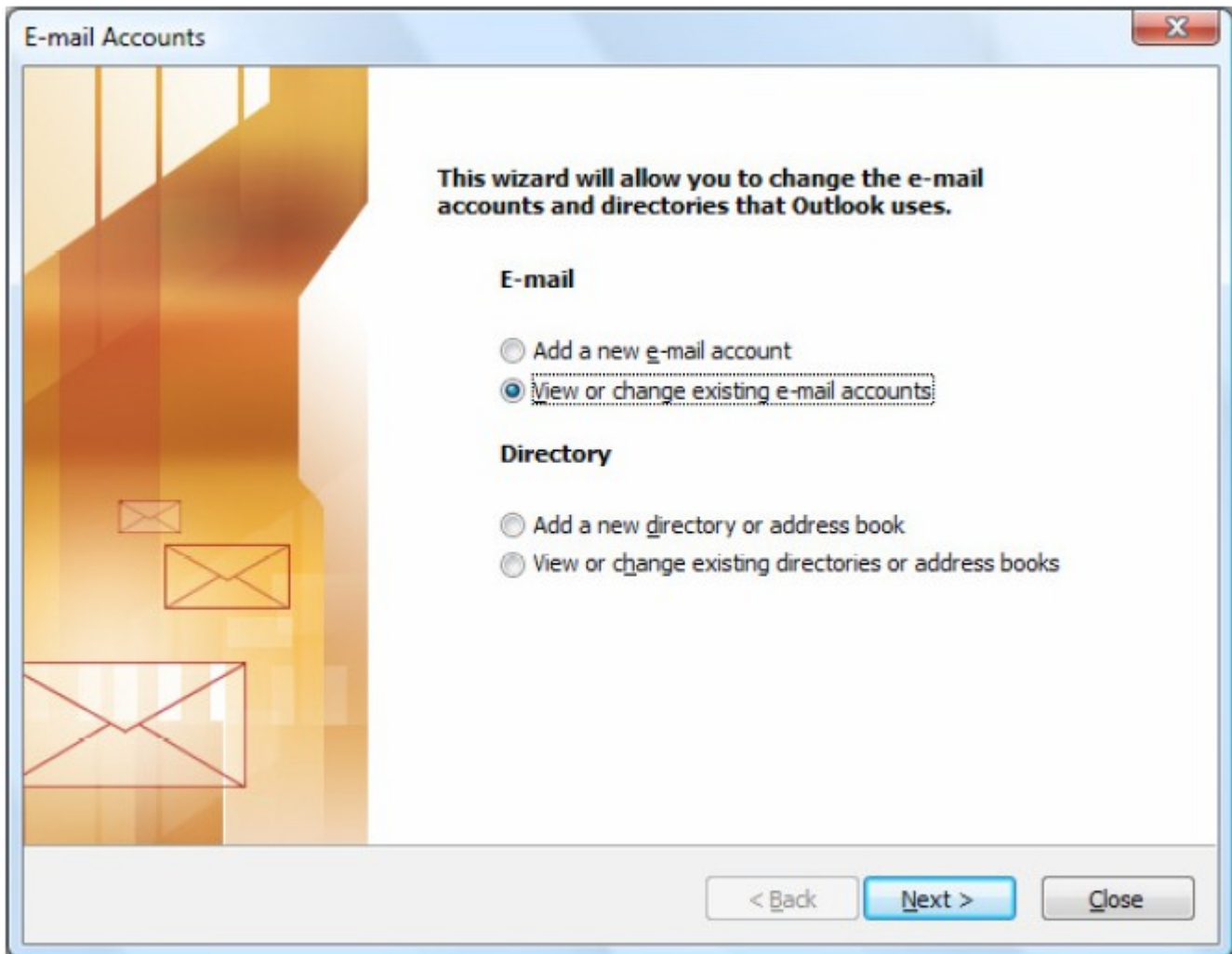




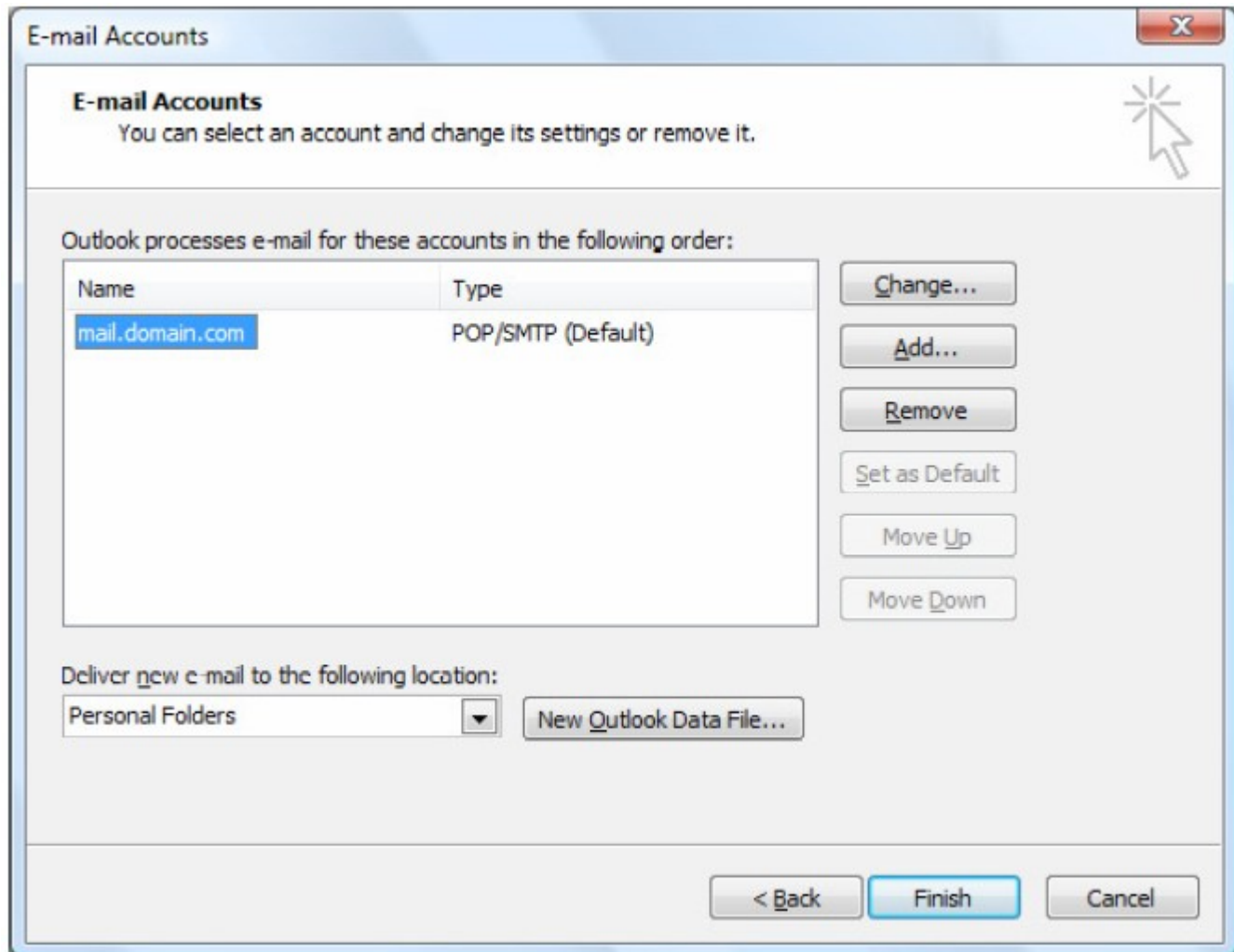
SecureMail Sending Account Configuration Microsoft Outlook 2002, 2003, 2007

1. Click the **Tools** menu and select **Accounts**
2. Select "View or change existing e-mail accounts" and click **Next**





3. Highlight your account and click change.





4. In the **Internet E-mail Settings (POP3)** edit the outgoing mail server to the mail server provided to you in your "SecureMail Startup Kit" When finished click on **More Settings**.

E-mail Accounts

Internet E-mail Settings (POP3)
Each of these settings are required to get your e-mail account working.

User Information

Your Name:

E-mail Address:

Server Information

Incoming mail server (POP3):

Outgoing mail server (SMTP):

Logon Information

User Name:

Password:

Remember password

Log on using Secure Password Authentication (SPA)

Test Settings

After filling out the information on this screen, we recommend you test your account by clicking the button below. (Requires network connection)

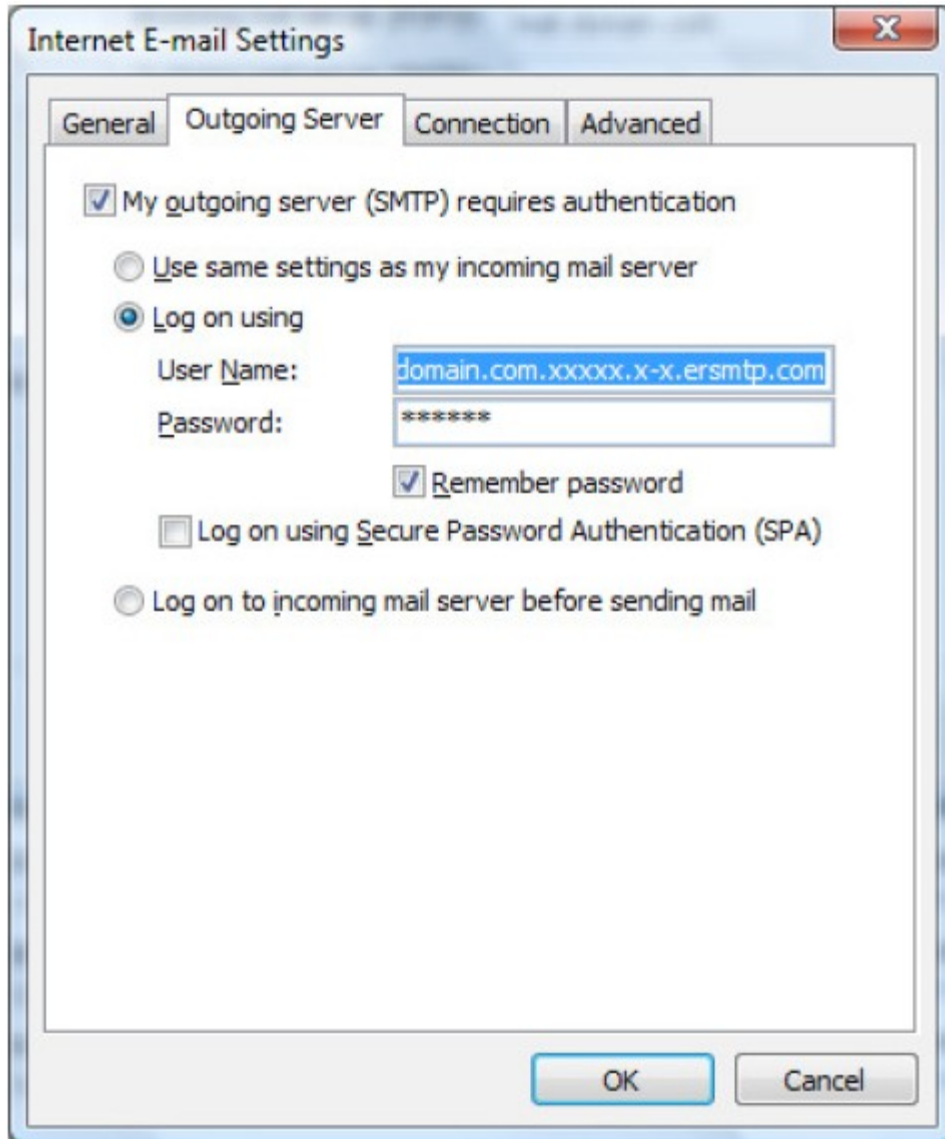


5. On the **Outgoing Server** tab do the following:

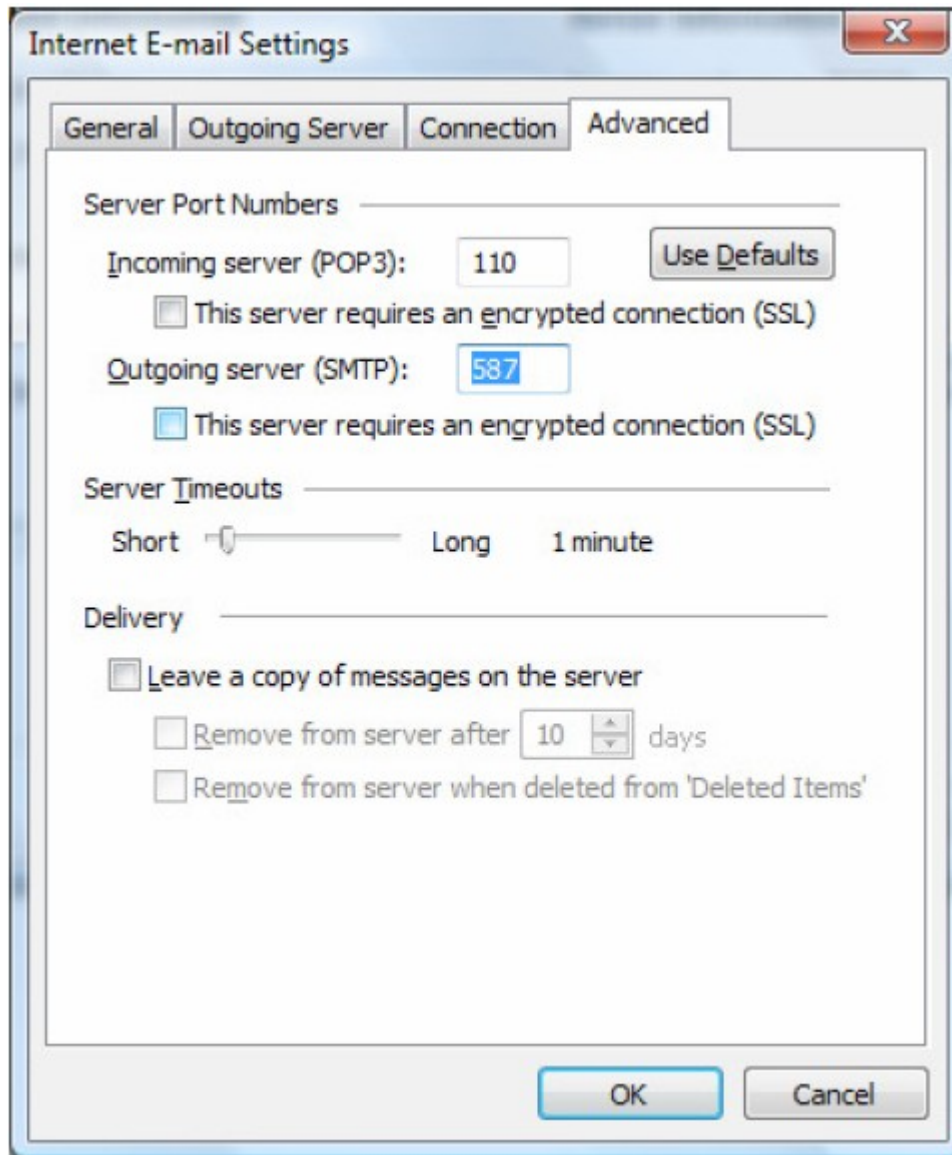
1. Check **My outgoing server (SMTP) requires authentication**

2. Check the **“Log on using”** radio button

3. Enter the username and password provide in your “SecureMail Starter Kit” and then click the “Advance Tab”



6. On the Advanced tab change the Outgoing server (SMTP) port number to **587** and click OK.



7. Click Next

E-mail Accounts [X]

Internet E-mail Settings (POP3)
Each of these settings are required to get your e-mail account working.

User Information

Your Name:

E-mail Address:

Server Information

Incoming mail server (POP3):

Outgoing mail server (SMTP):

Logon Information

User Name:

Password:

Remember password

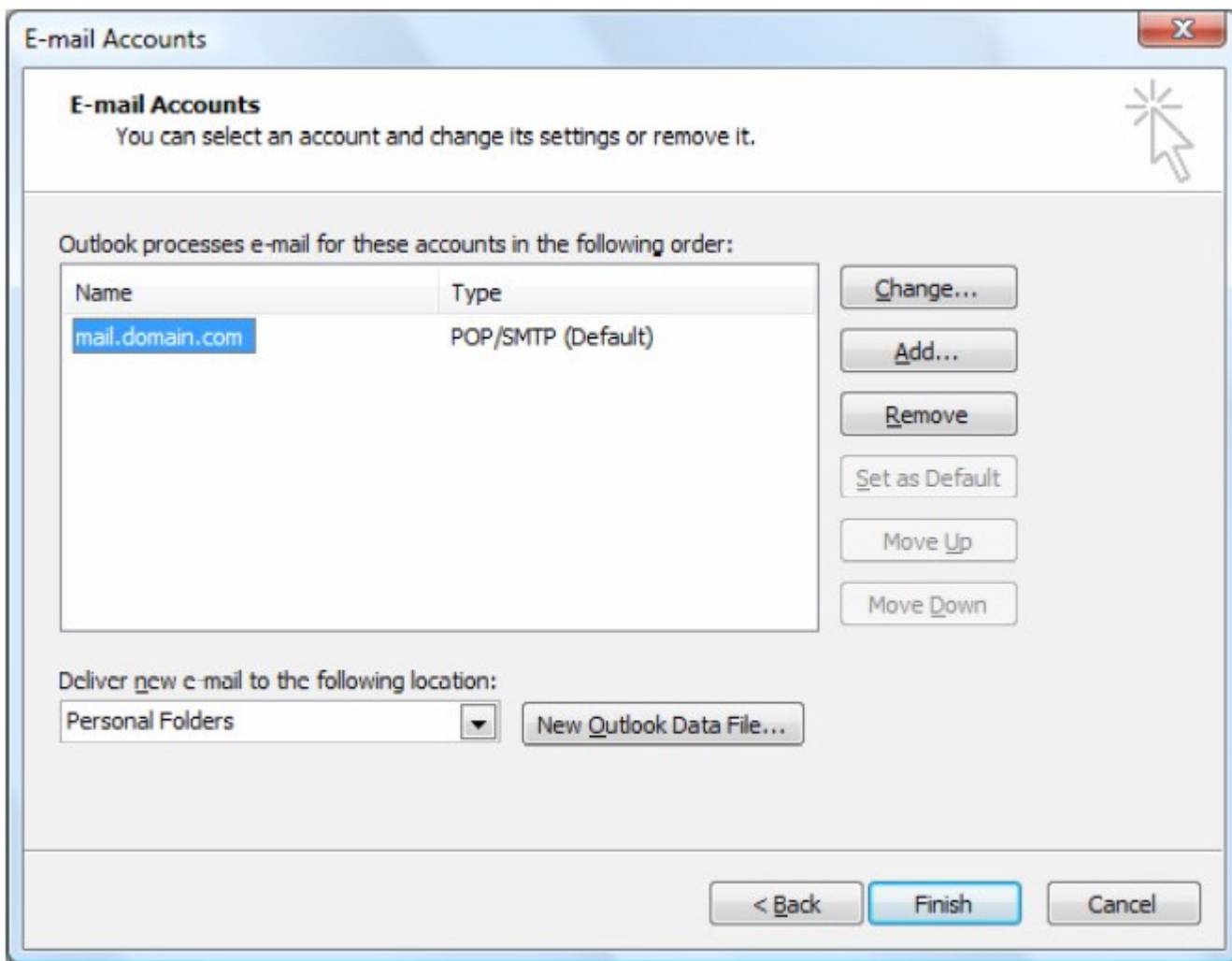
Log on using Secure Password Authentication (SPA)

Test Settings

After filling out the information on this screen, we recommend you test your account by clicking the button below. (Requires network connection)



8. Click Finish.



Your email account is now configured to send mail through Erado's SecureMail.
If you have further questions or issues please open a support ticket with Technical Support at <http://support.erado.com>