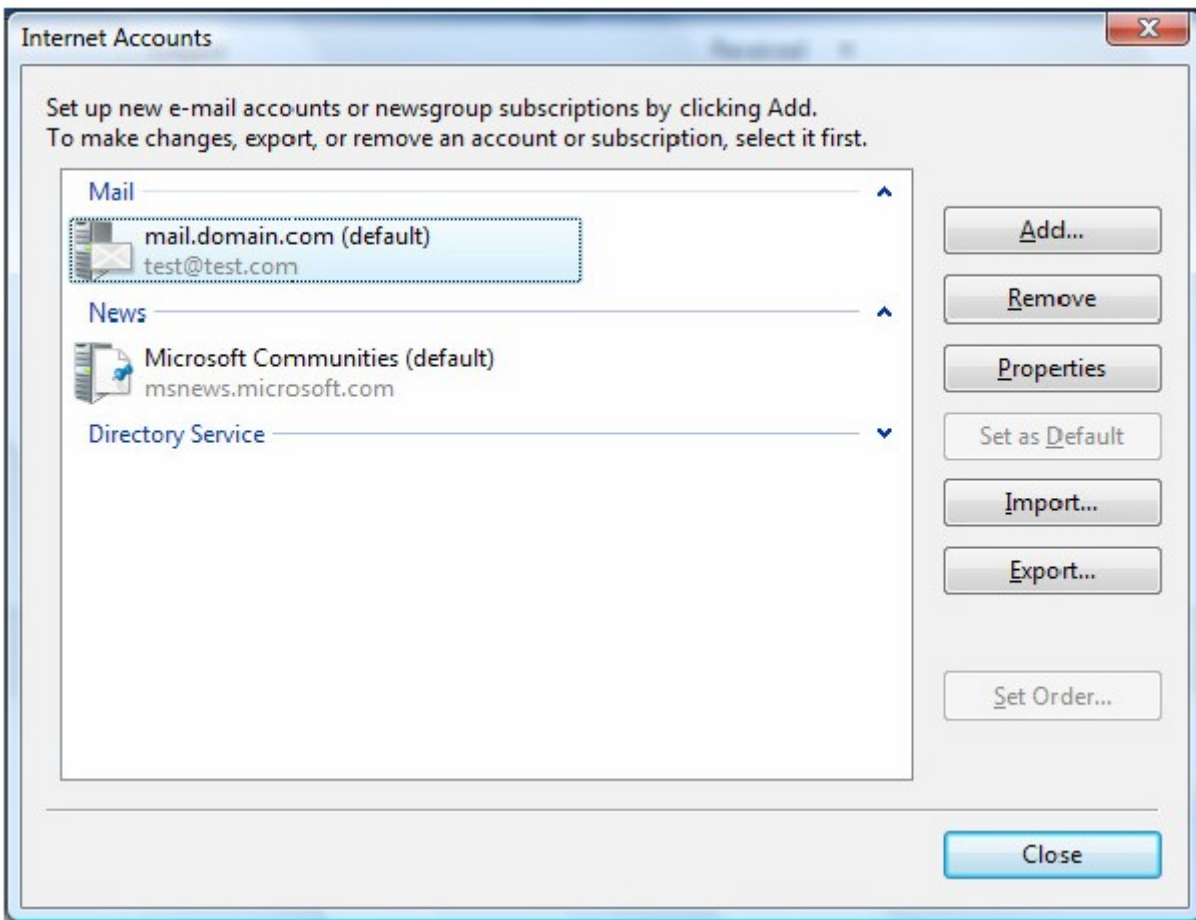




SecureMail Sending Account Configuration Microsoft Outlook Express, Windows Vista Mail

1. Click the **Tools** menu and select **Accounts**
2. Highlight your account and click **Properties**.



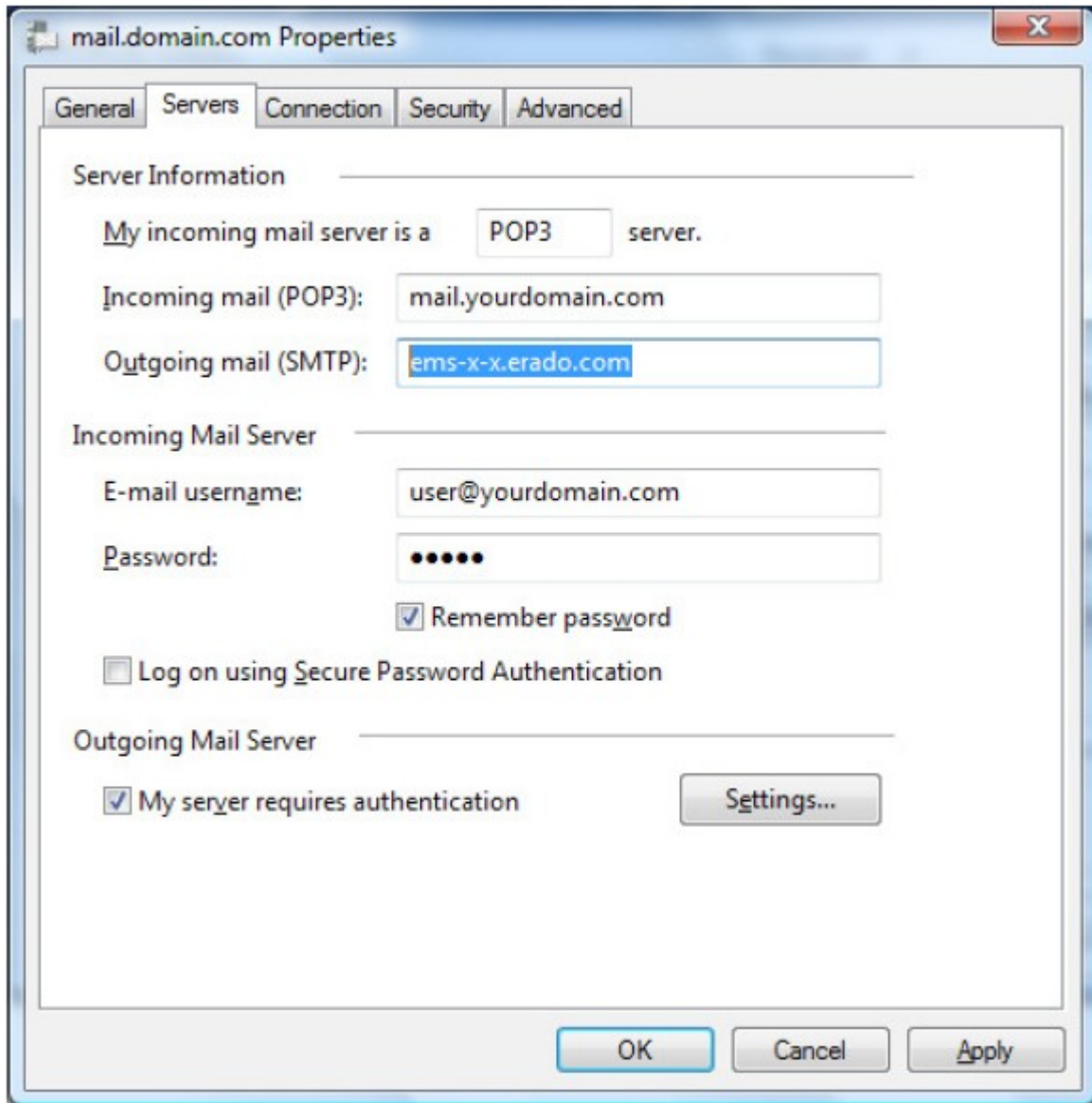


3. Click the **Servers Tab**.

1. Change your **“Outgoing mail (SMTP)”** to the server name provide in your “SecureMail Starter Kit”.

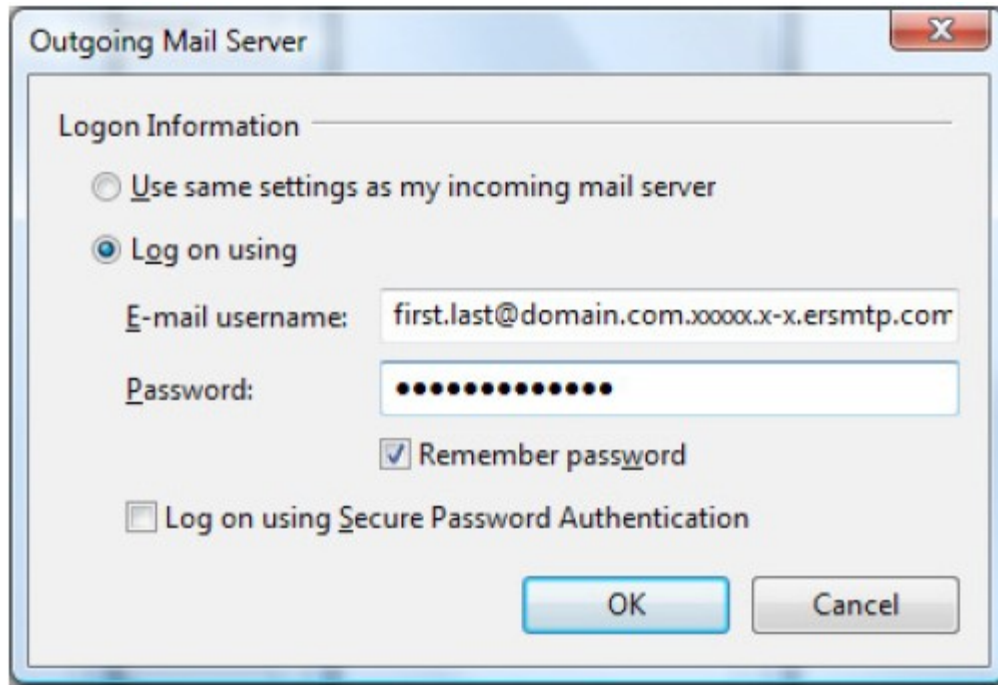
2. Check **“My server requires authentication”**

3. Click the **“Settings...”** button





4. Check the “**Log on using**” radio button next enter the username and password provide in your “SecureMail Starter Kit” and then click the “Remember Password” then OK



5. Click Ok on the Outgoing server window.
6. Click Apply, then OK on the account settings window.
7. Click Close on the Internet Accounts window.

Your email account is now configured to send mail through Erado's SecureMail.
If you have further questions or issues please open a support ticket with Technical Support at <http://support.erado.com>