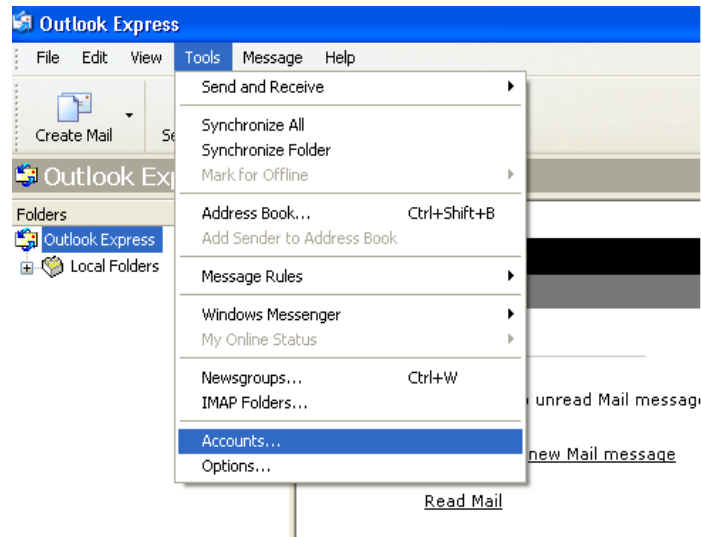


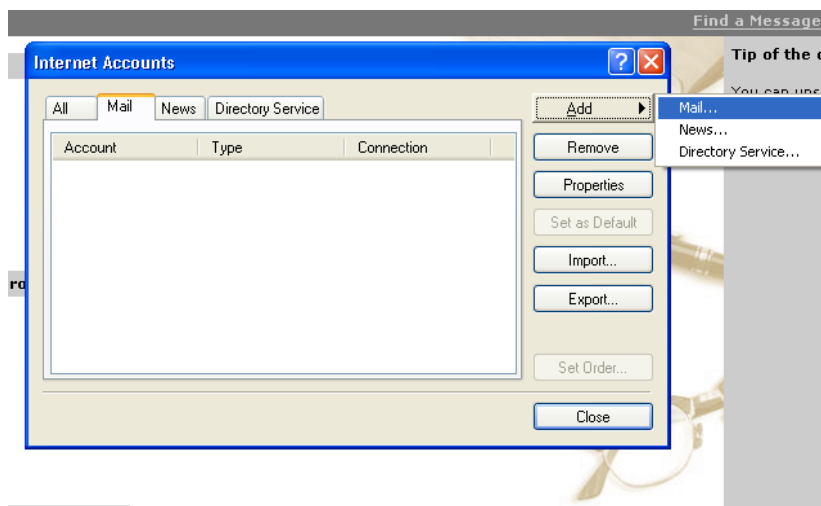


Outlook Express POP3 Email Account Configuration

1. Click the **Tools** menu and select **Accounts**



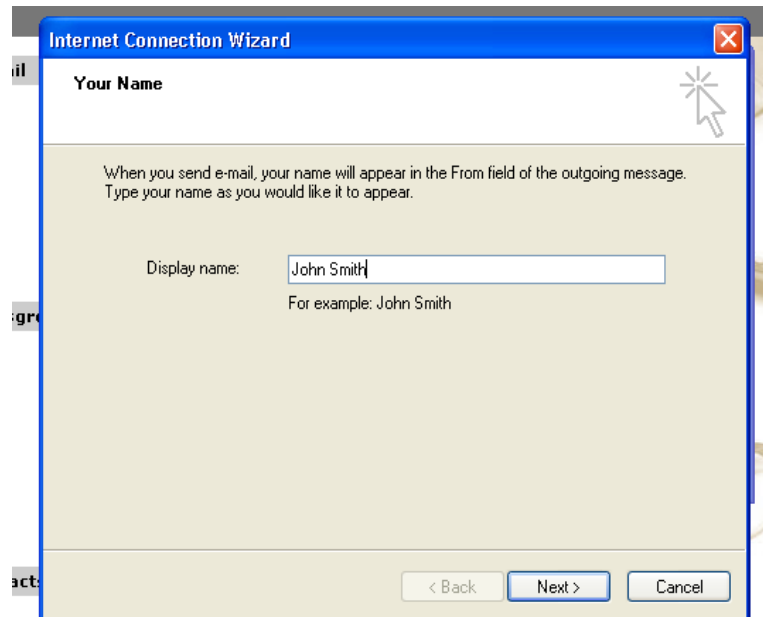
2. Make sure the **Mail** tab is active, and click **Add/Mail**



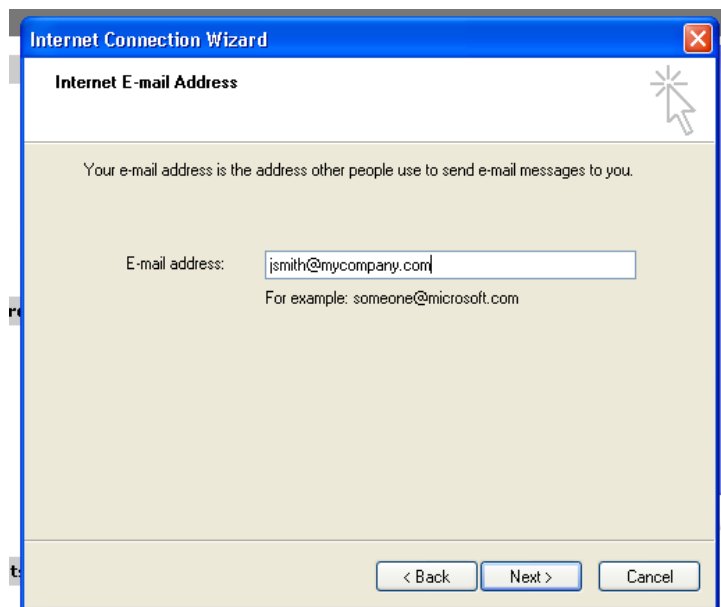
4. The Internet Connection Wizard will launch.



5. Enter the name you want others to see when they receive e-mail from you, and click **Next**.

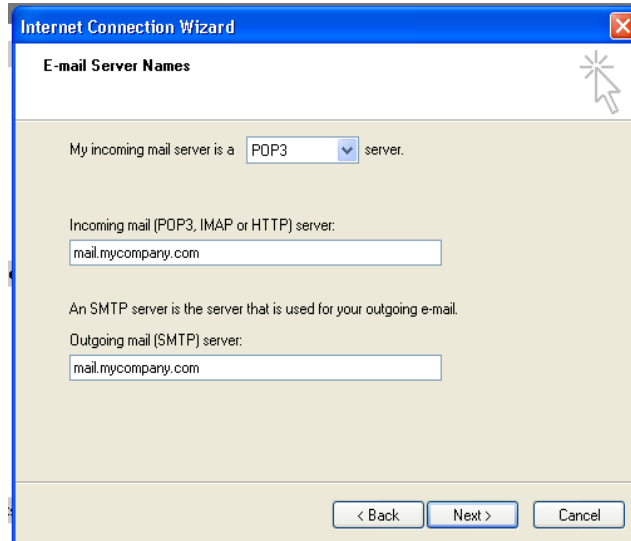


6. In the **Internet E-mail Address** enter your email address and Click **Next**.

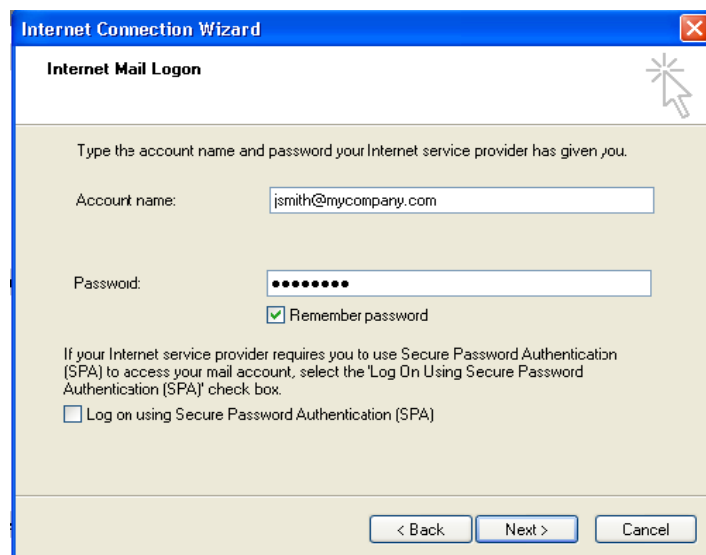




7. In the E-mail Server Names window, select **my incoming mail server is (POP3)** and enter the mail server name provided in your **Erado Welcome kit** and then click Next.



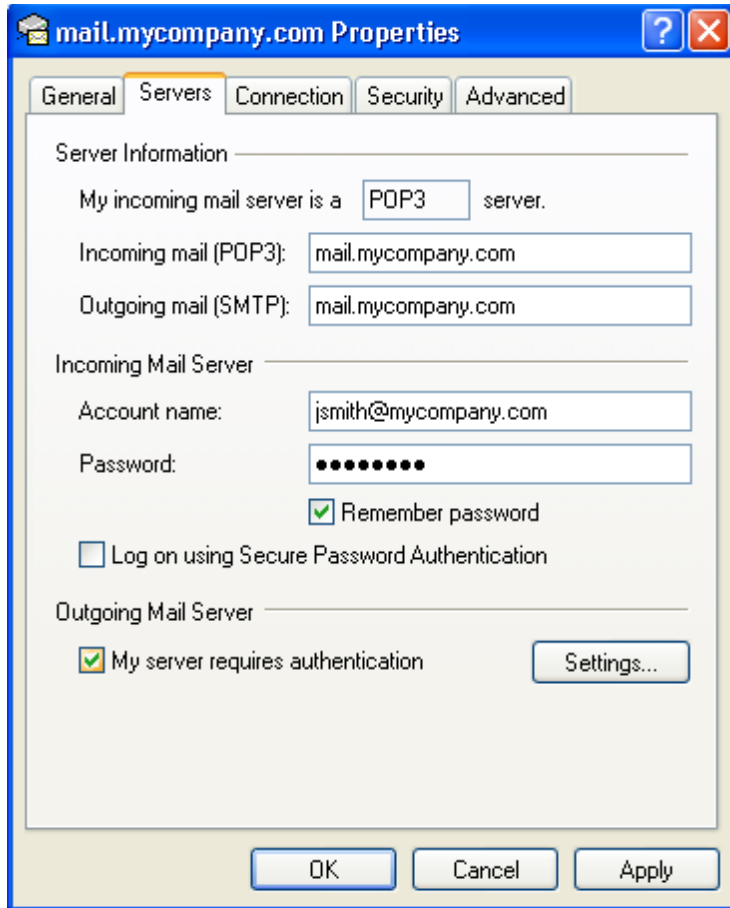
8. In the **Internet Mail Logon** window, enter your user name (**your full email address**) and password and Click **Next**.



9. Click **Finish**, then click "Properties" of your new account and click on the **Servers** tab and choose "**My server requires authentication.**"



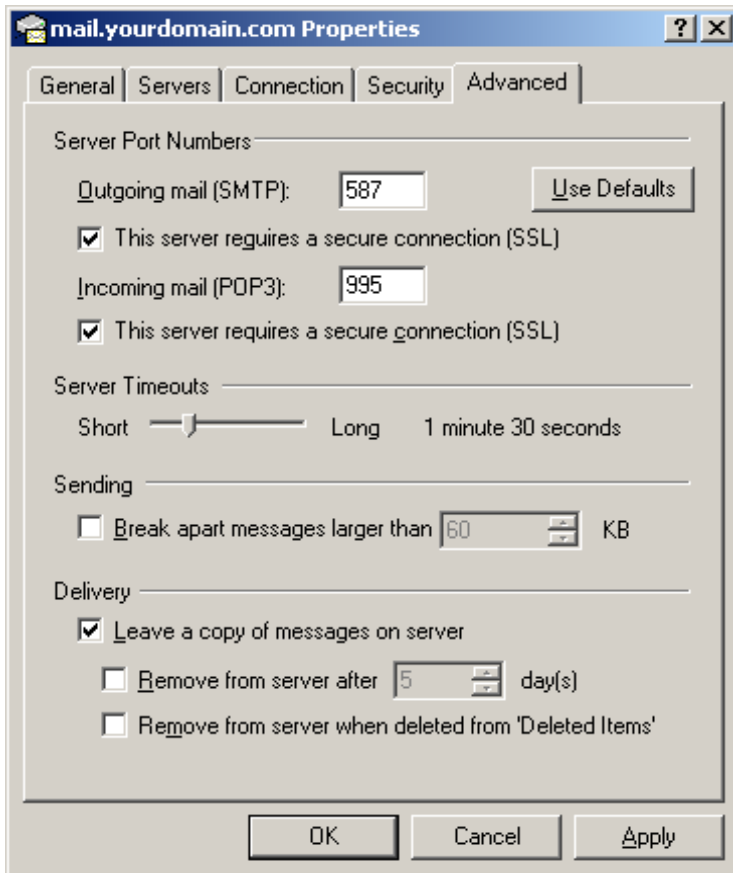
10. Double Click the account and click on the Servers tab and check **"My server requires authentication."** Then click on **Settings** and make sure that it is set to **Use same settings** as my mail server



11. On the Advanced tab enter the following:



Set the incoming server **(POP3): 995** and
click This server requires an encrypted connection (SSL)
Set the outgoing server **(SMTP): 587** and
click This server requires an encrypted connection (SSL)



Click **OK** and choose **Finish**. Your account is now set up.