



# Erado SecureMail Setup Instructions for Service Providers and Multiple Domain Configurations

This document covers the following Microsoft Exchange Server Editions

- Microsoft Small Business Server 2003
- Microsoft Exchange Standard Edition 2003
- Microsoft Exchange Enterprise Edition 2003

Your estimated time to complete this configuration is approximately 30 minutes.

**This is an advance configuration and requires Registry Key Changes.  
These changes should ONLY be performed by a  
Microsoft Certified Systems Engineer.**

**PLEASE FOLLOW THESE DIRECTIONS STEP BY STEP. BY NOT FOLLOWING THESE  
DIRECTIONS YOU WILL ENCOUNTER PROBLEMS AND SIGNIFICANTLY INCREASE YOUR  
SETUP TIME.**

If you do run into problems please contact technical support at 866-67ERADO ext 2. We will require you to use Citrix Go To Meeting service, so that you can share your screen and we can assist you through this setup process.



**Step 1. Edit the Registry as Follows:**

HKEY\_LOCAL\_MACHINE\System\CurrentControlSet\Services\Resvc\Parameters  
Add the following Dword Value  
(CheckConnectorRestrictions and set it to 1)

**Step 2. Create a new Mail enabled group named "SecureMail"**

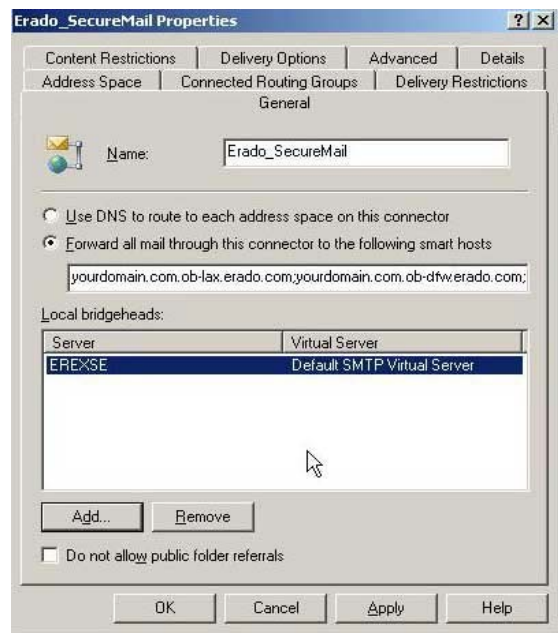
Add your users exchange account(s) that will be using SecureMail to this group.

**Step 3. Create a second SMTP connector named "Erado\_SecureMail"**

A. Set the ADDRESS SPACE on your SMTP connector and the new "Erado\_SecureMail" connector to \*, set cost for both to 1)

B. Set the smarthost address for the Erado\_SecureMail" connector to the following:

yourdomain.com.outbound.erado.com;  
yourdomain.com.ob-lax.erado.com;  
yourdomain.com.ob-dfw.erado.com;  
yourdomain.com.ob-chi.erado.com



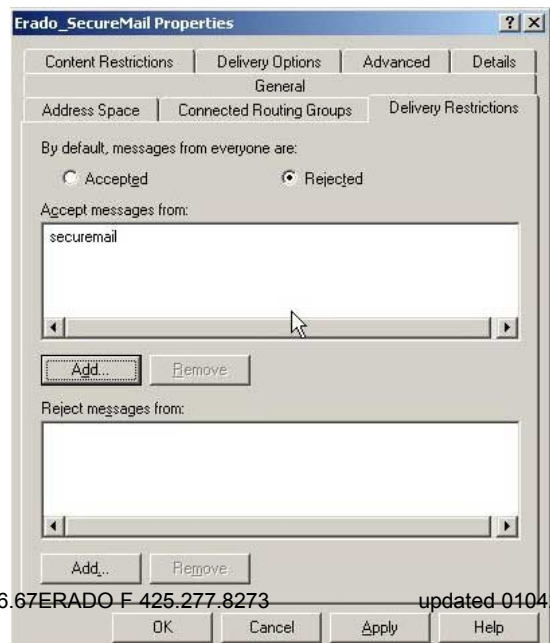
default the

**MAKE SURE TO REPLACE yourdomain.com with organizations domain name.**

C. On the "Delivery Restrictions" tab, set:

"By default, messages from everyone \*REJECTED\*\*"

next click "ADD" under "Accept messages from:" SecureMail



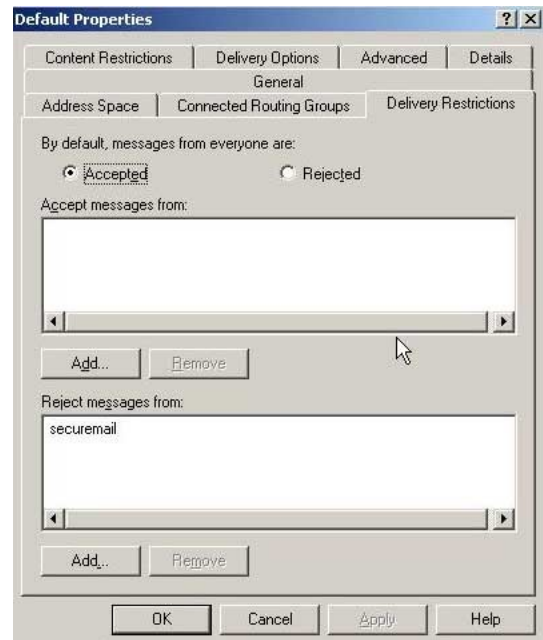
are:



**Step 4.** On the default SMTP connector click the "Delivery Restrictions" tab and set to:

"By default, messages from everyone are: \*ACCEPTED\*"

next click "ADD" under "Reject messages from:" SecureMail



**Step 5.** Restart the following services

- Microsoft Exchange MTA Stacks (MSEExchangeMTA)
- Microsoft Exchange Routing Engine (RESvc)
- Simple Mail Transfer Protocol (SMTPSVC)

or reboot server.