



How to Configure SecureMail for Exchange 2007

This document covers the following Microsoft Exchange Server Editions

- Microsoft Exchange Standard Edition 2007
- Microsoft Exchange Enterprise Edition 2007

Your estimated time to complete this configuration is approximately 15 minutes,

PLEASE FOLLOW THESE DIRECTIONS STEP BY STEP. BY NOT FOLLOWING THESE DIRECTIONS YOU WILL ENCOUNTER PROBLEMS AND SIGNIFICANTLY INCREASE YOUR SETUP TIME.

If you do run into problems please contact technical support at 866-67ERADO ext 2. We will require you to use Citrix Go To Meeting service, so that you can share your screen and we can assist you though this setup process.

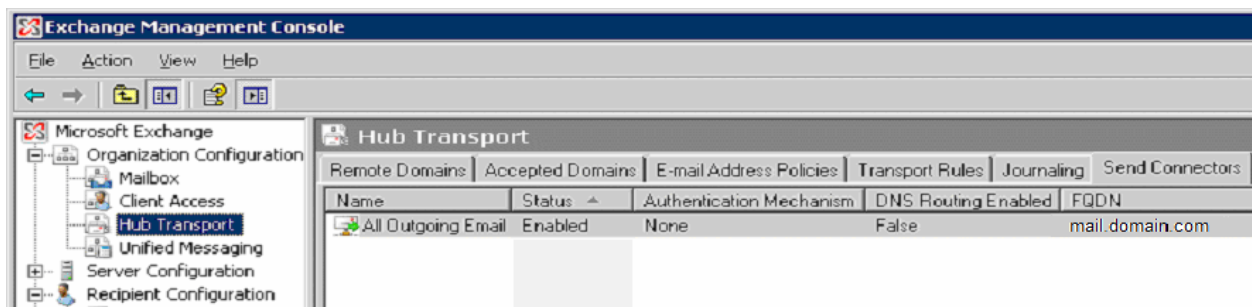
If your Exchange Server 2007 is currently able to send emails externally, a **Send Connector** must already have been created and configured correctly on the Hub Transport server. Configuring Exchange 2007 to use Erado's Smarthosts, requires you to modify the settings on this Send Connector.

For Exchange 2007, Microsoft has split up into separate roles, the various jobs that Exchange has to perform, with the implication that each role will be handled by a different server.

The Hub Transport role is the one responsible for sending and receiving external emails. In the real world of small to medium sized companies, a **single** Exchange server is likely to be performing **all** the various roles.

Step 1. Open Exchange Management Console

Open **Exchange Management Console**

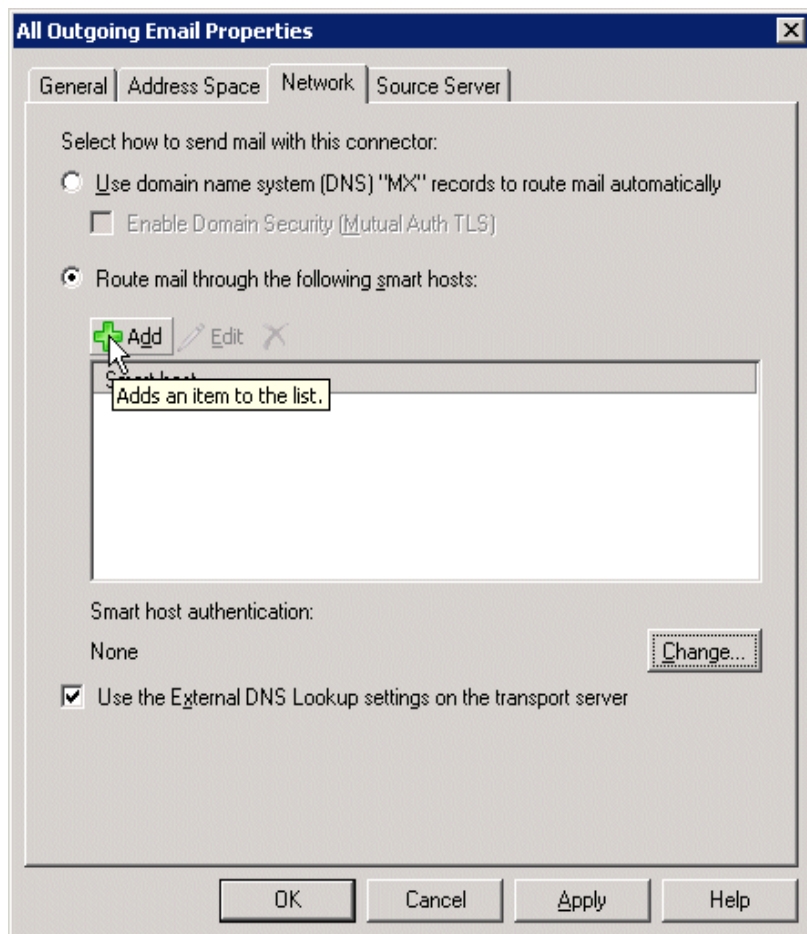


Click on the **+** next to **Organization Configuration**
Select **Hub Transport** and
select the **Send Connectors** tab:



Step 2. Add Smart Host

Right-click on the existing **Send Connector**, select **Properties** and go to the **Network** tab. Select "**Route mail through the following smart hosts:**" and click **Add**:



Step 3. Configuring The Smart Hosts

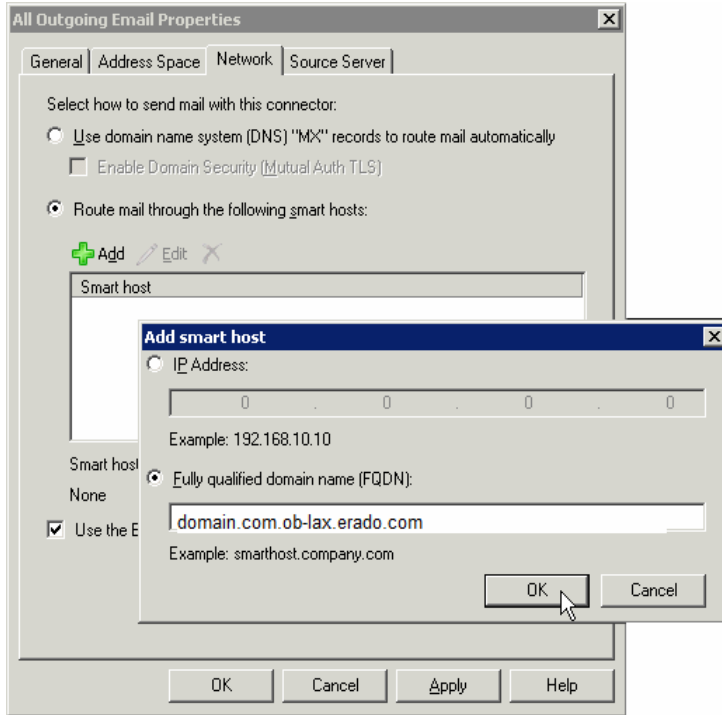
To assure proper load balancing and failover across all of our data centers please enter the following outbound servers separated by a semi colon and make sure you choose "Forward all mail though this connection to the following smart hosts" as follows:

yourdomain.com.outbound.erado.com (replace your domain.com with your domain name)
yourdomain.com.ob-lax.erado.com
yourdomain.com.ob-dfw.erado.com
yourdomain.com.ob-chi.erado.com

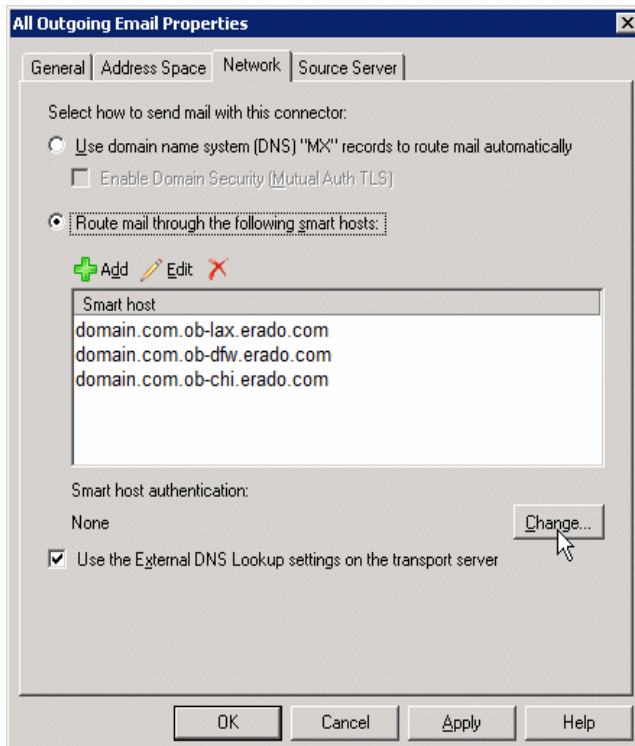
MAKE SURE TO REPLACE yourdomain.com with your organizations domain name.



Specify the first Smart Host as shown below:



Next add the remaining Erado's Smart Host clusters:

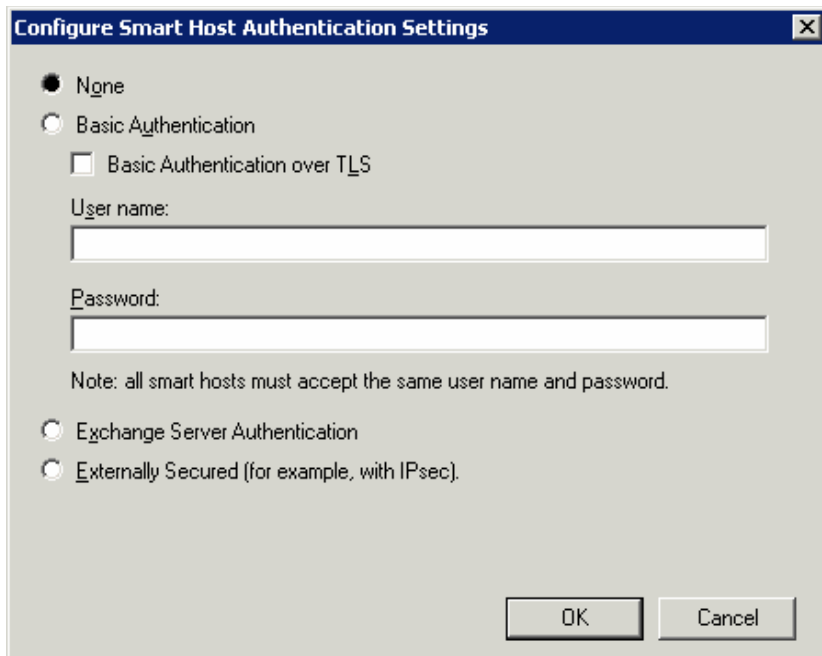




Click **Change...** to set the authentication options.

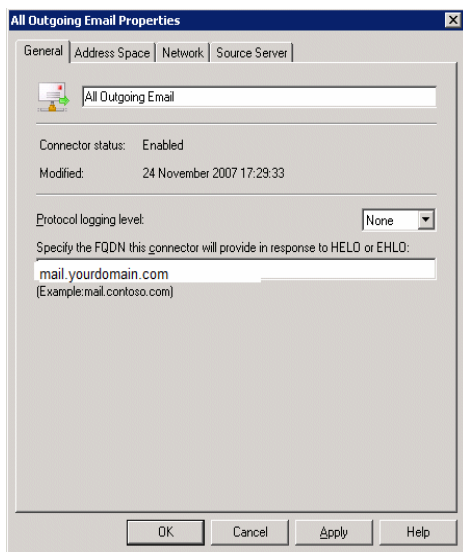
Step 4. Set Authentication

Please set this to none as we authenticate based on the sending mail servers ip address

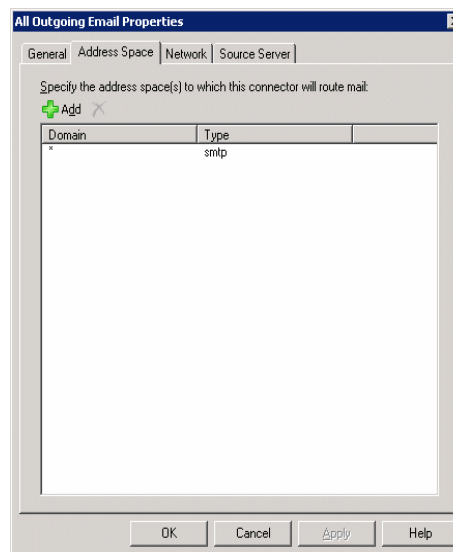


There shouldn't be anything that needs changing on the other 3 tabs, but we've shown below, what they should typically look like.

The General Tab:

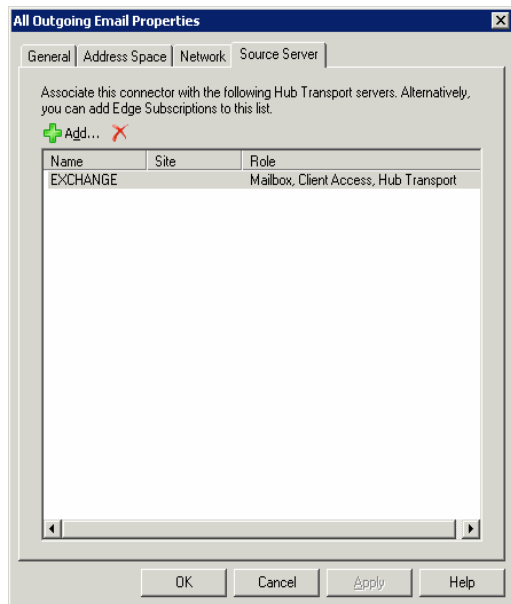


The Address Space Tab





The Source Server Tab



When you've finished, the Send Connector should look like this:

The changes you've made to the **Send Connector** will take effect straight away without you having to reboot the server or restart any services.

Lastly for those that utilize Sender Policy Frame Work Records (SPF Records)

You need to add include:erado.com to your existing SPF record, below are examples.

If your DNS server runs BIND

```
yourdomain.com. IN TXT "v=spf1 ip4:1.1.1.1 a:mail.yourdomain.com include:erado.com ~all"
```

If you run DNS server is tinydns (djbdns)

```
'yourdomain.com:v=spf1 ip4\0721.1.1.1 a\072mail.yourdomain.com include\072erado.com ~all:3600
```

If you are unsure of your DNS server or how to configure please contact your DNS provider.